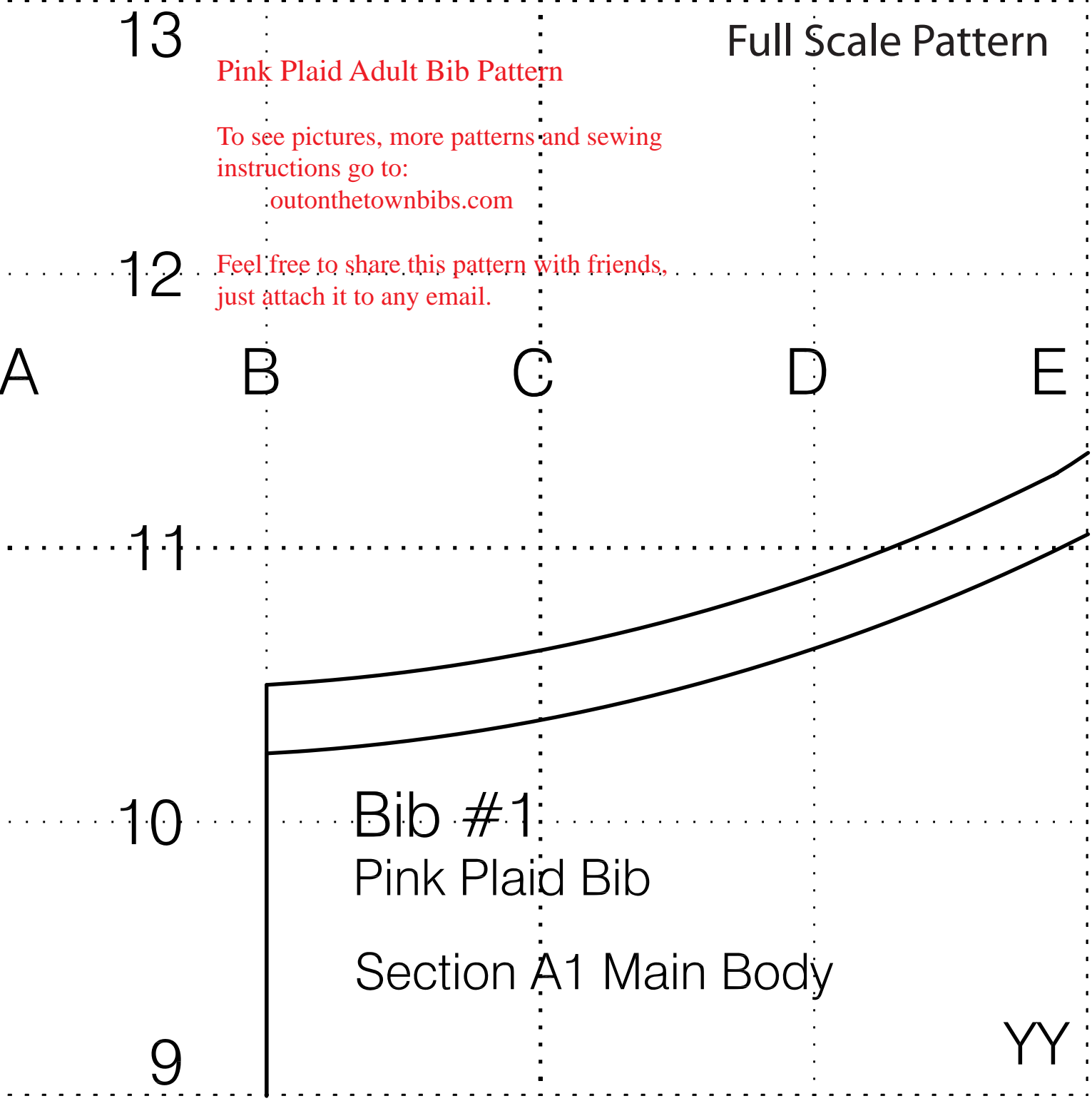


Full Scale Pattern

Pink Plaid Adult Bib Pattern

To see pictures, more patterns and sewing instructions go to:  
[outonthetownbibs.com](http://outonthetownbibs.com)

Feel free to share this pattern with friends, just attach it to any email.



E<sub>Tip</sub>



F

G

H

I

13

12

11

10

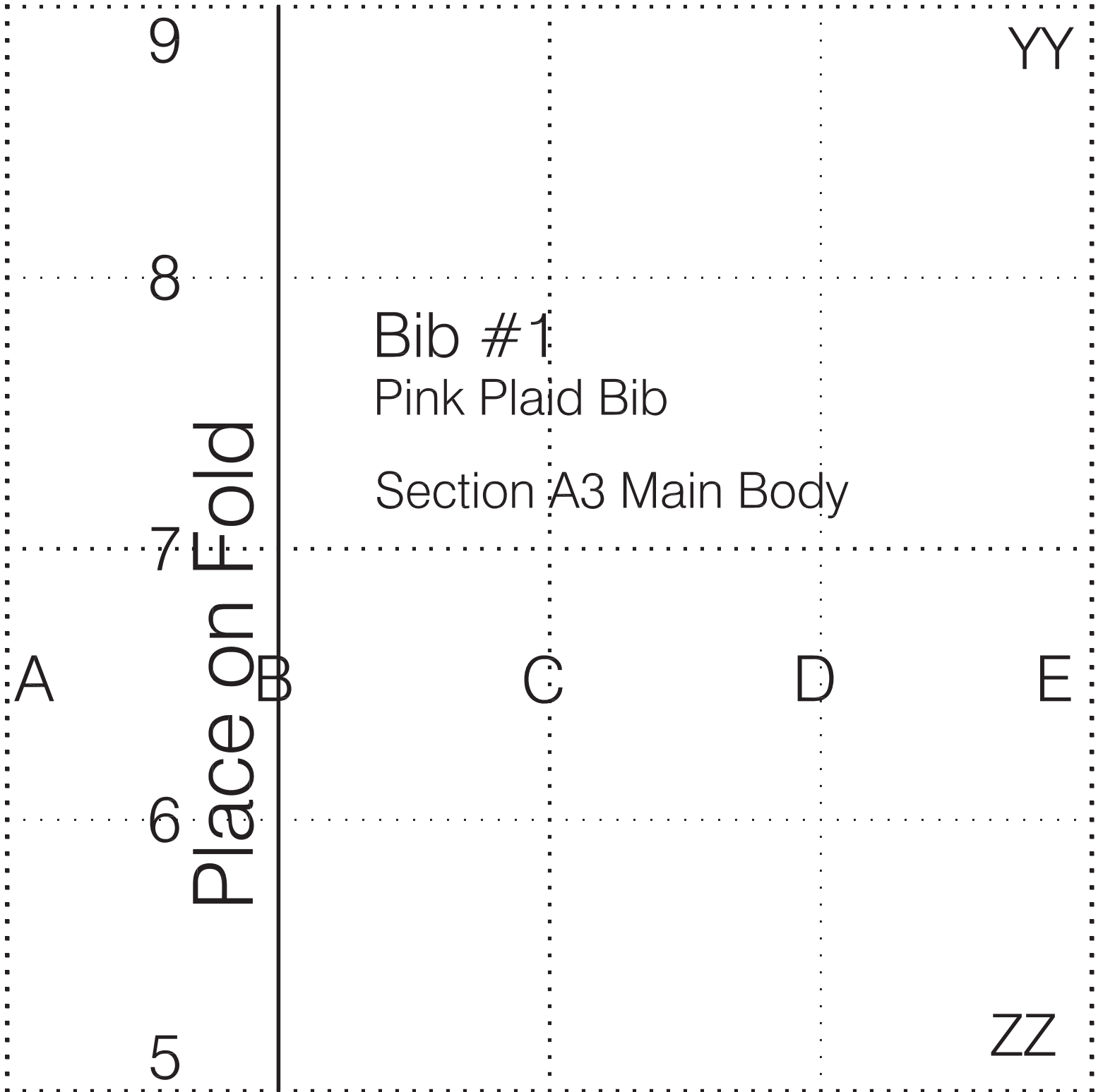
9

Bib #1

Pink Plaid Bib

Section A2 Main Body

YY



YY

E

F

G

H

I

9

8

7

6

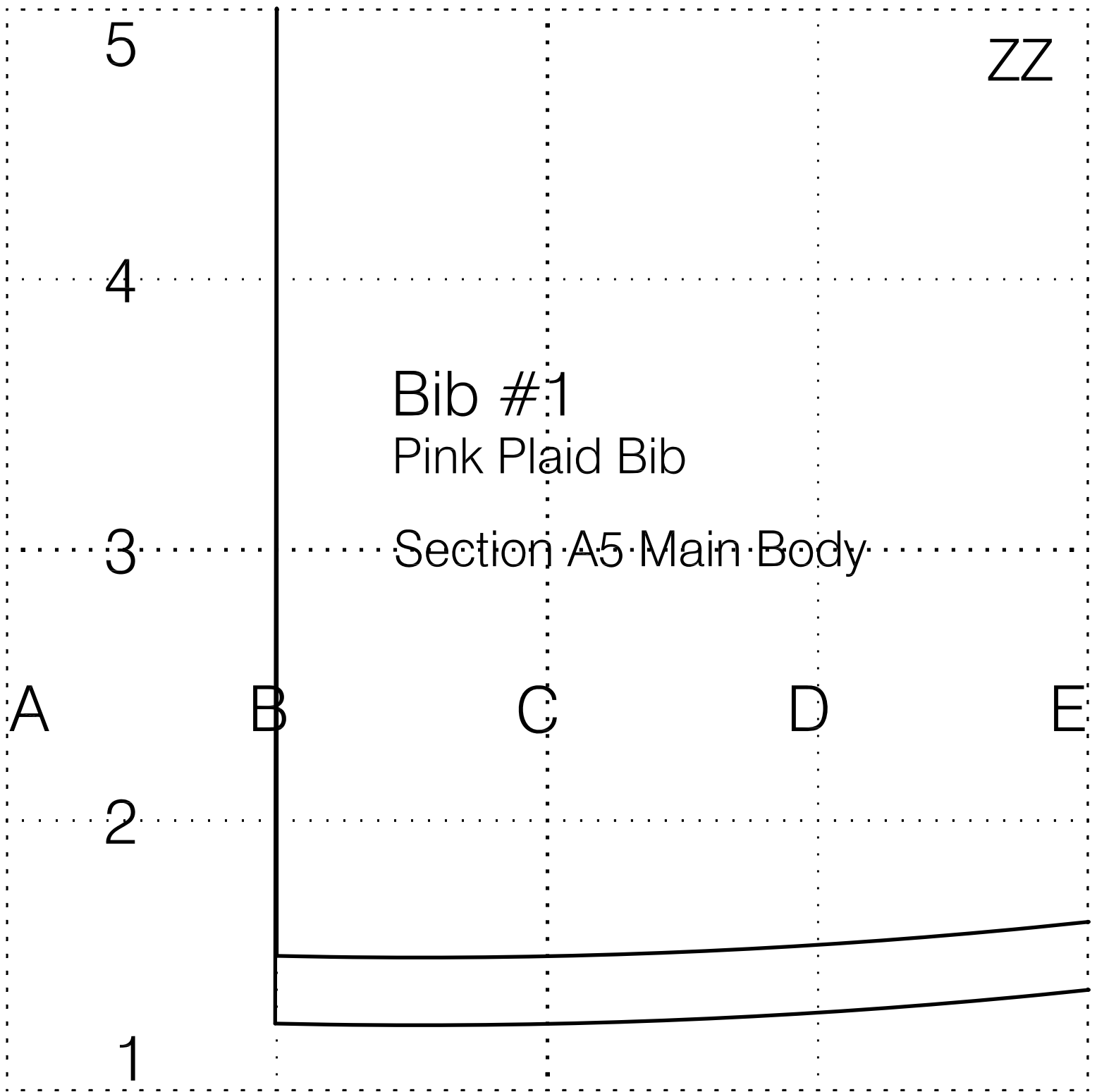
5

Bib #1

Pink Plaid Bib

Section A4 Main Body

ZZ



ZZ

5

Full Scale Pattern

Bib #1

Pink Plaid Bib

Section A6 Main Body

4

3

2

1

E

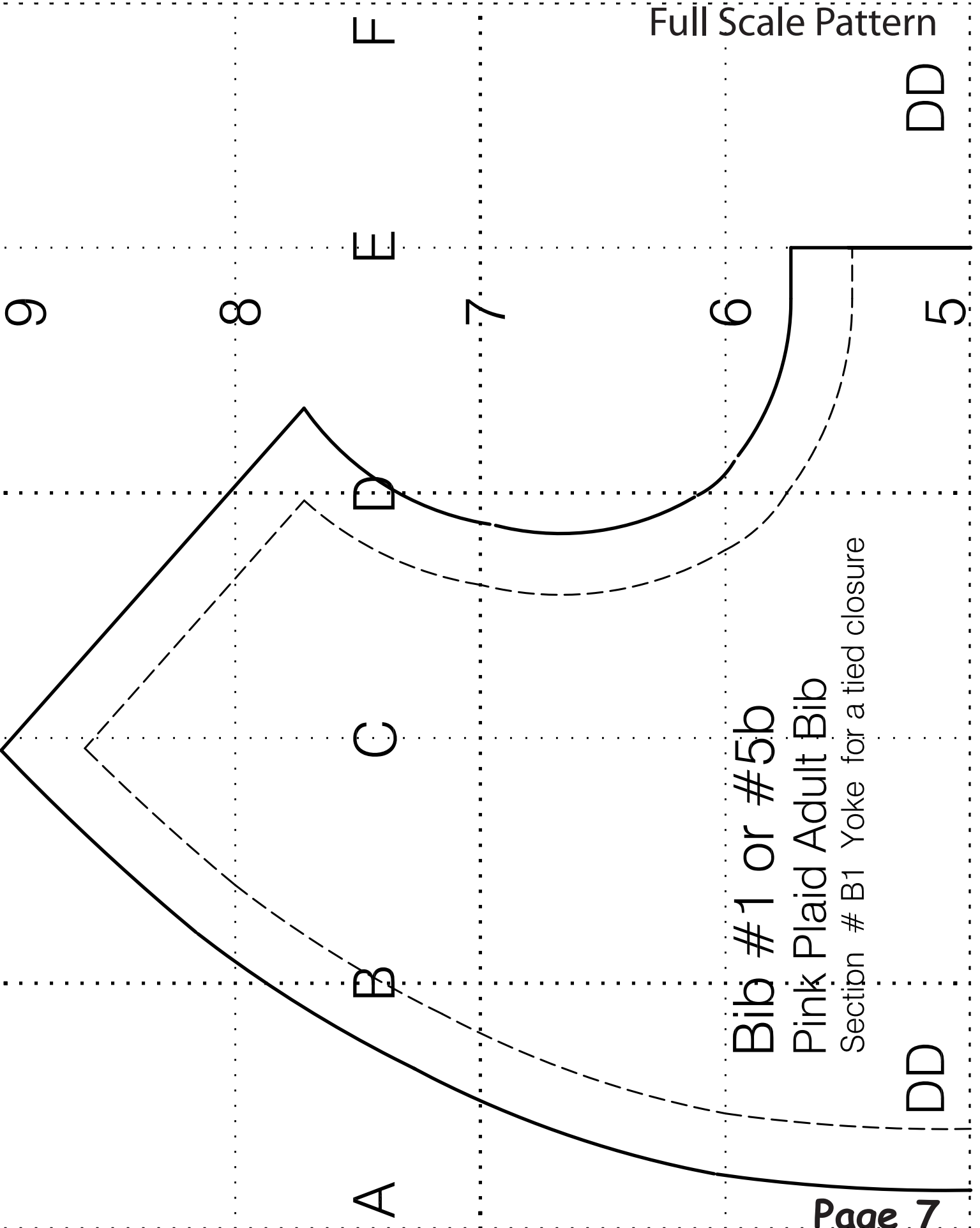
F

G

H

I

J



A

B

C

D

E

F

9

8

7

6

5

Bib #1 or #5b

Pink Plaid Adult Bib

Section # B1 Yoke for a tied closure

DD

DD

DD

Place on Fold

5

4

3

F

2

1

Bib #1 or #5b  
Pink Plaid Adult Bib

Section # B2 Yoke for a tied closure

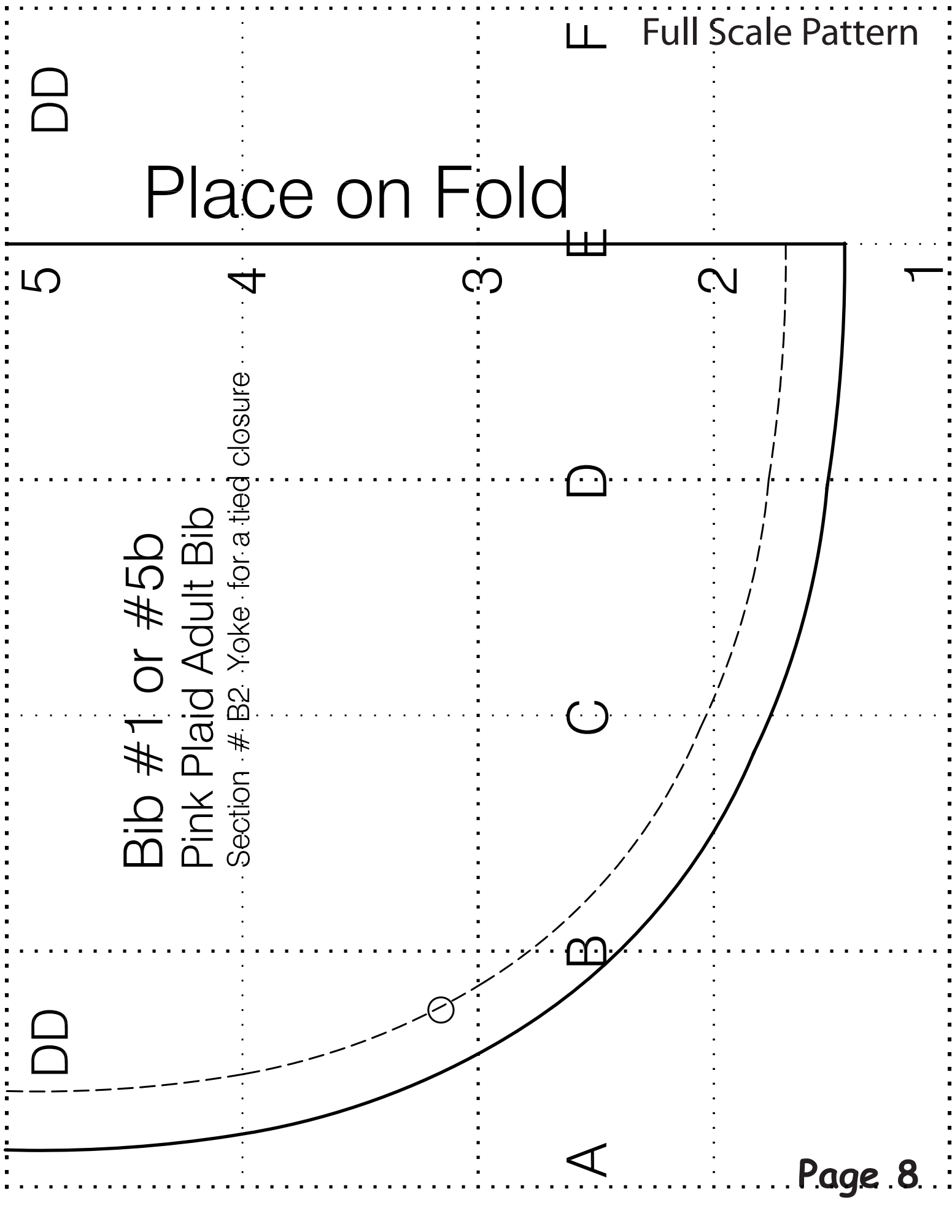
D

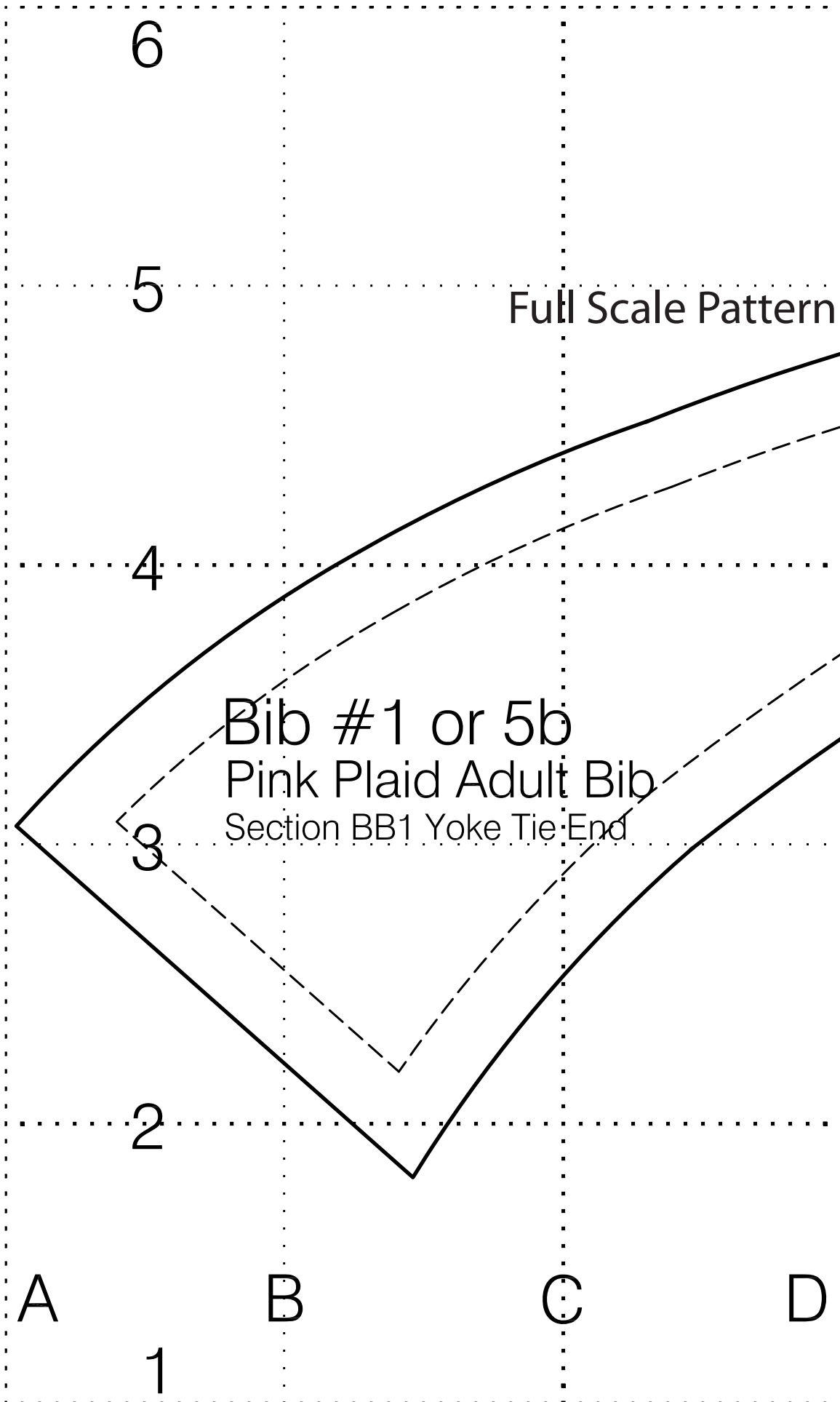
C

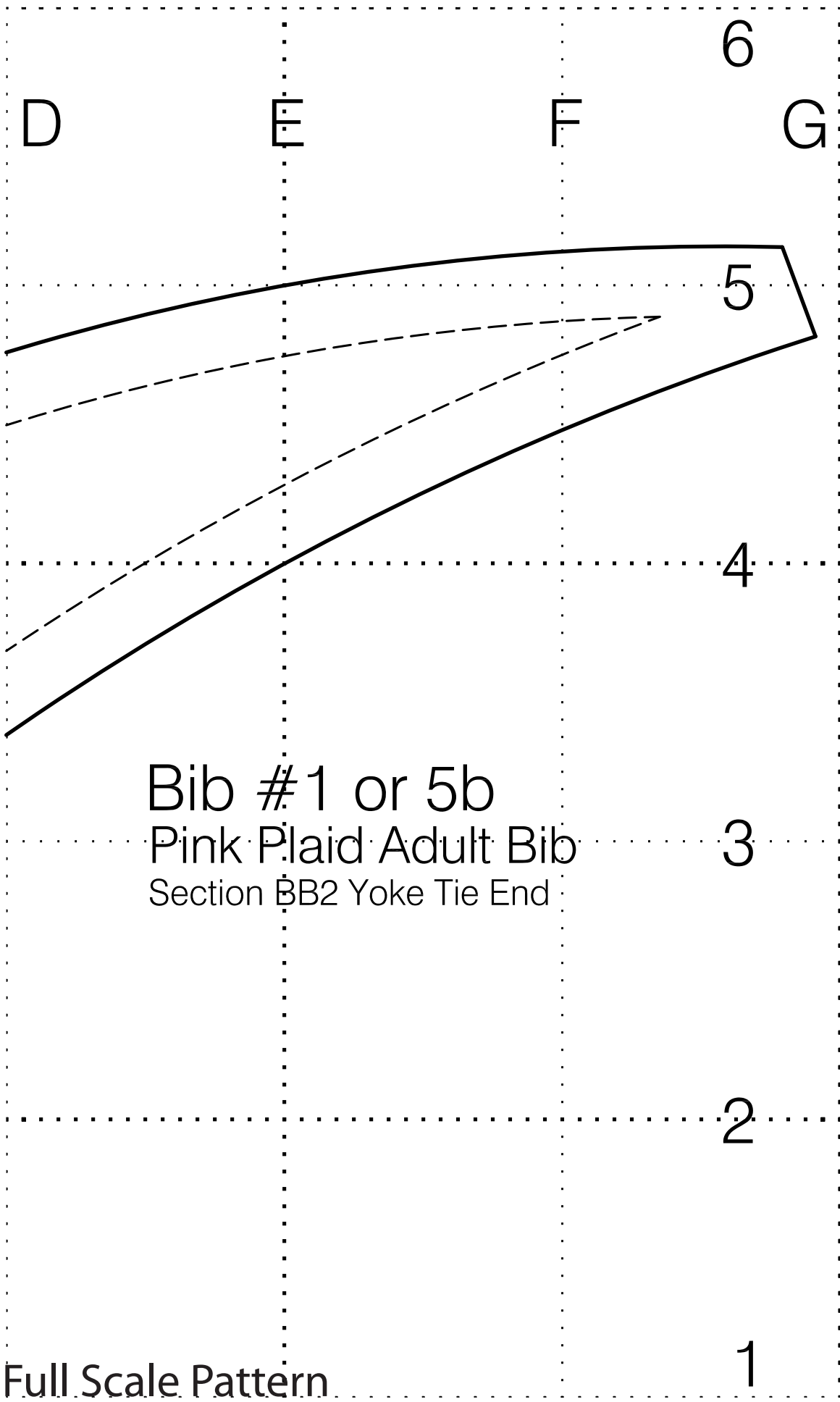
B

A

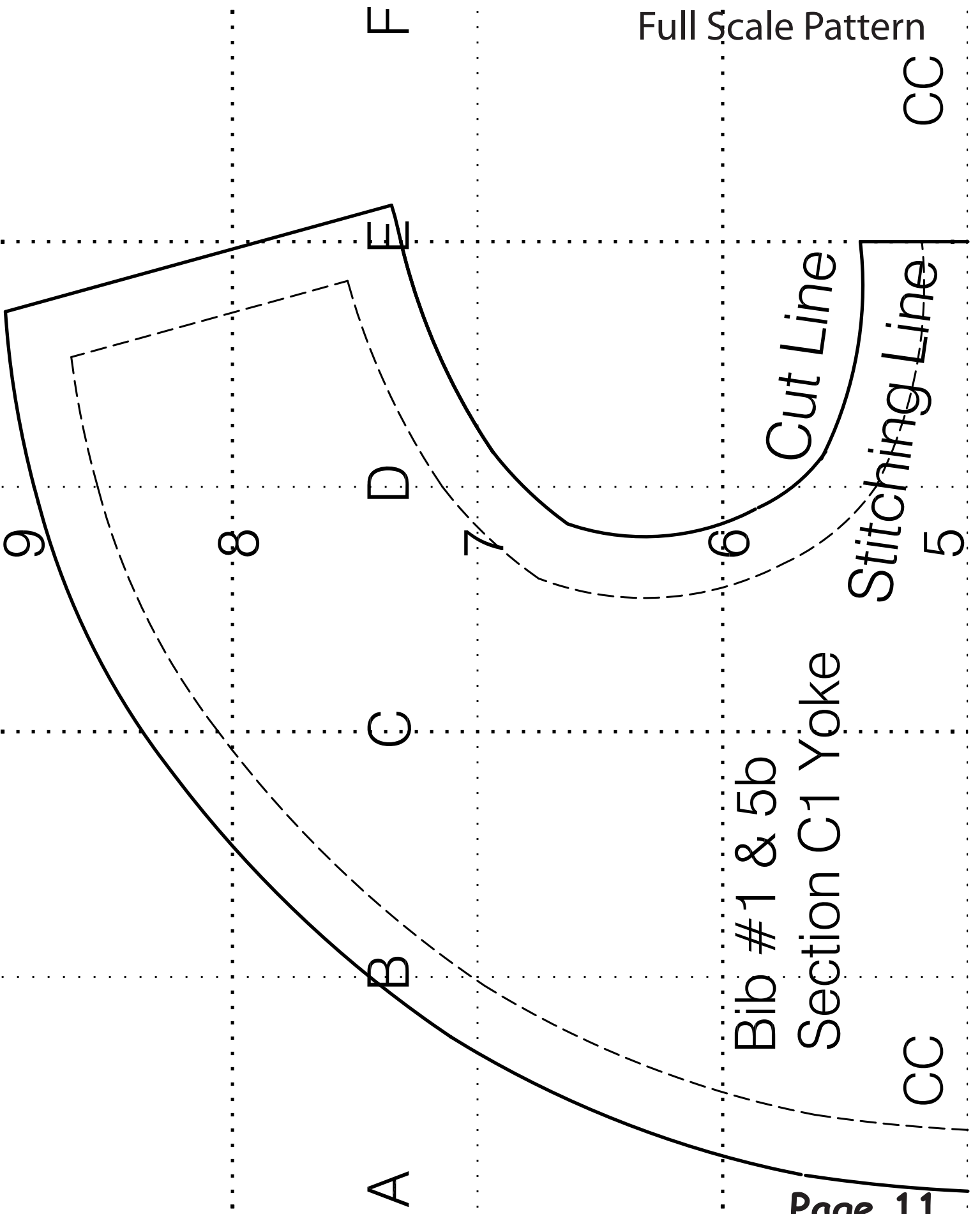
DD







Bib #1 or 5b  
 Pink Plaid Adult Bib  
 Section BB2 Yoke Tie End

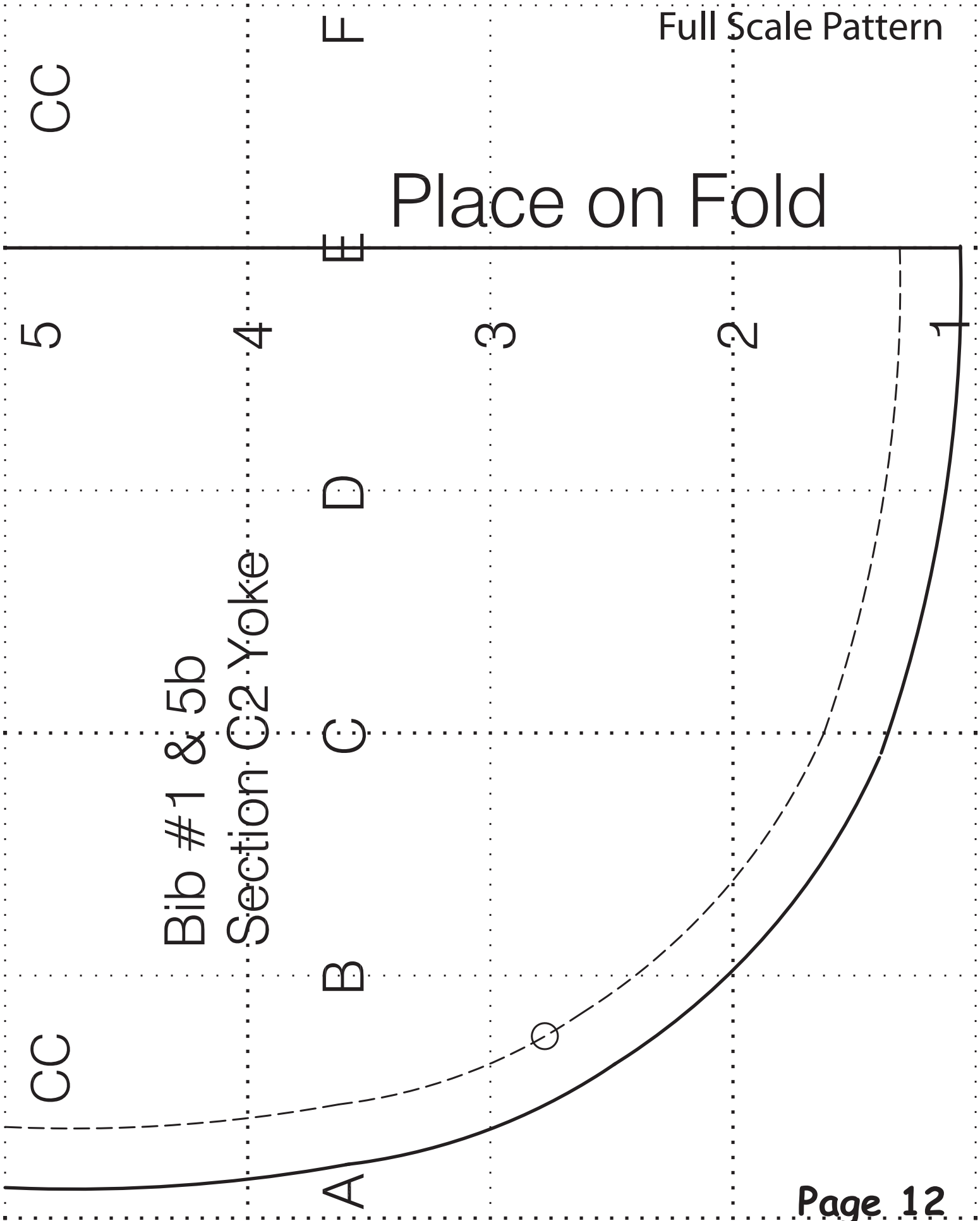


Bib #1 & 5b

Section C1 Yoke

Cut Line  
Stitching Line

Place on Fold



Bib #1 & 5b

Section C2 Yoke

CC

5

4

3

2

1

F

E

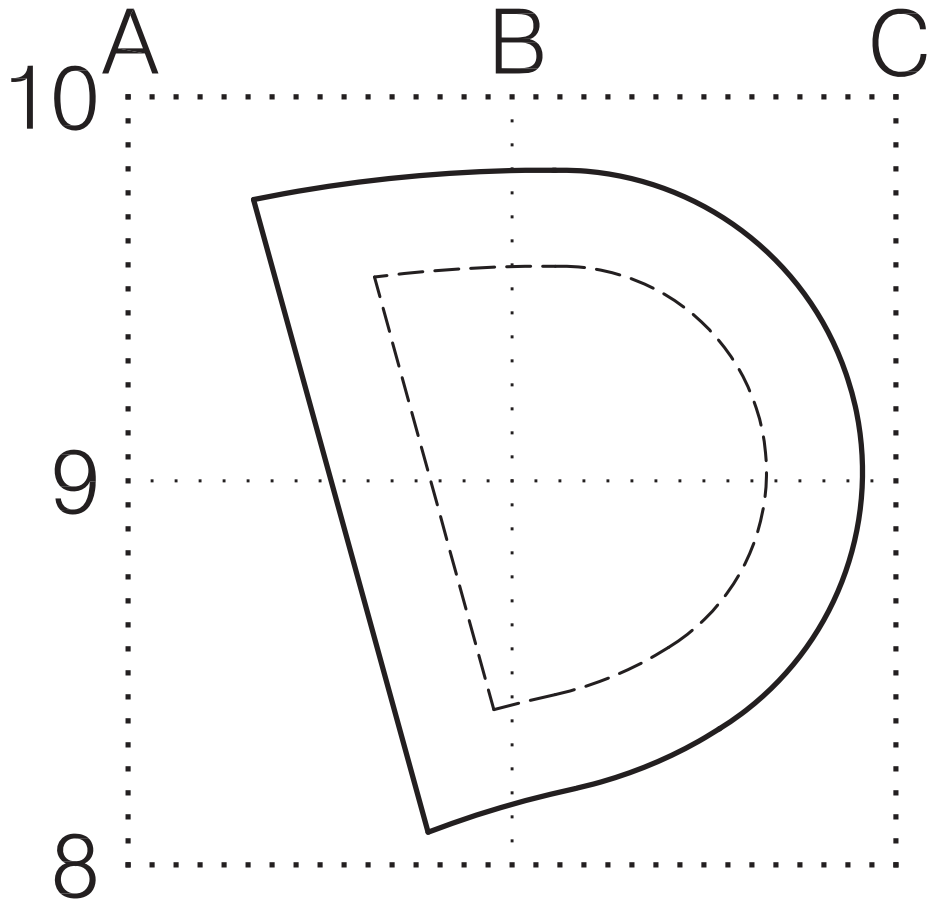
D

C

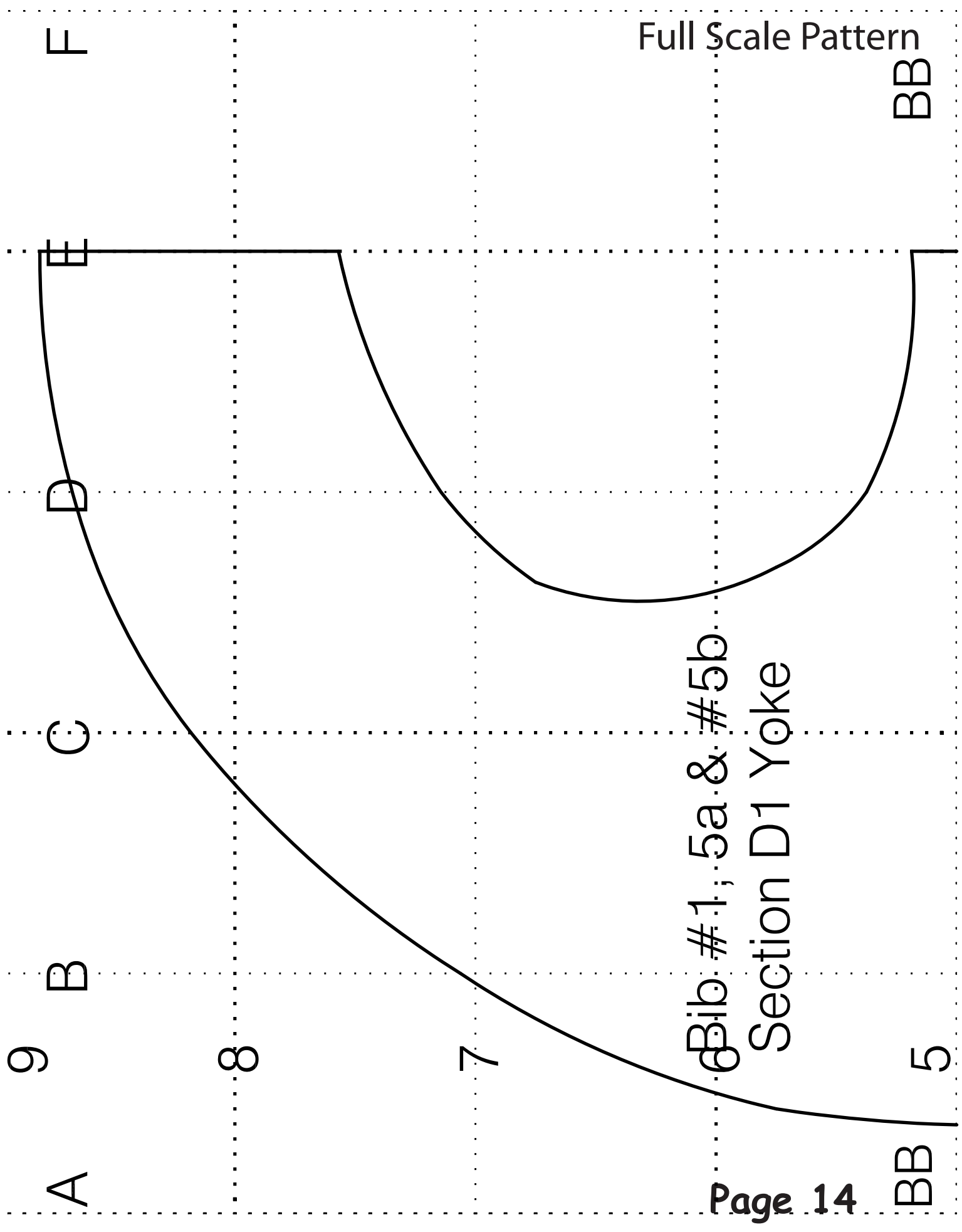
B

A

CC



Bib #1 or 5b  
Pink Plaid Adult Bib  
Section CC Yoke Tie End



F

BB

Place on Fold

E

D

Bib #1,5a & #5b  
Section D2 Yoke

C

B

5

4

3

2

1

A

BB